

Stampo ottica – super finitura in CBN



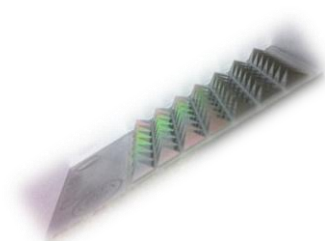
SAMUMETAL

Macchina : Makino F5

Attacco : HSK A 63

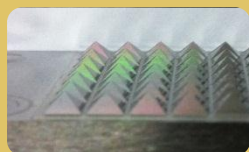
Mandrino : Showa HPC-H

Materiale : Stavax 52 Hrc



Ciclo di lavoro

- Sgr HSB 2010-0100
- Sem Fin HSB 2004-0060
- Fin CBN 2004-008



S	F	Ad	Rd
20000	1200	0,2	0,05
20000	600	0,05	0,05
20000	1200	0,02	0,02

FRESE IN CBN con tagliente elicoidale

